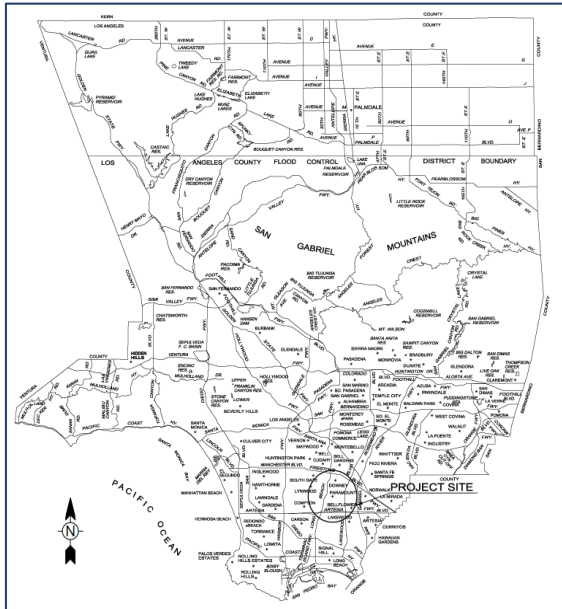


## Project Overview

### Location:

- Spane Park, a city-owned park in Paramount
- Tributary to LA River
- Located in a disadvantaged community
- Identified as top tier regional project location in the Lower Los Angeles River Watershed Management Program (LLAR WMP)

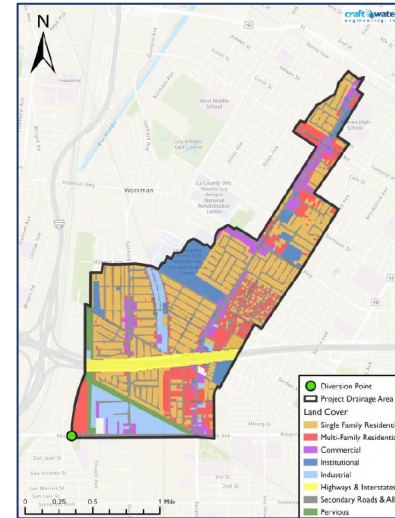
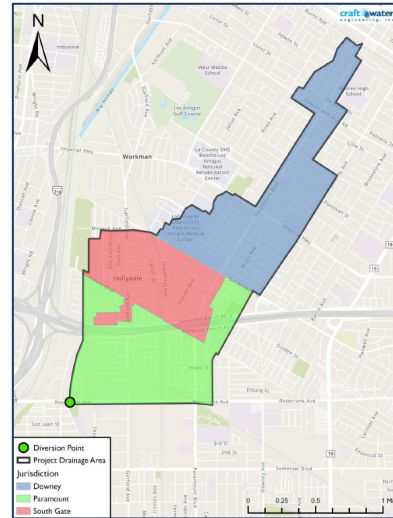


### Key Benefits:

- Water quality
- Water supply
- Community investment
- Recreational opportunities

Funding Request: \$18,913,128 to complete Project construction

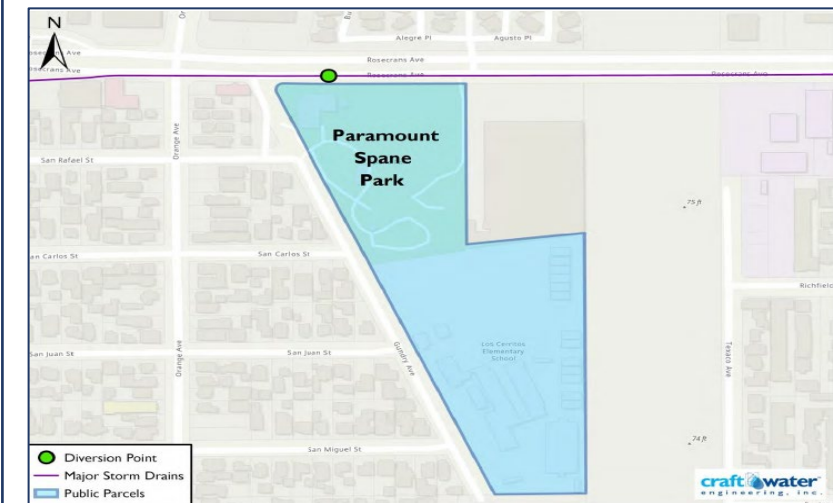
## Site Considerations



- The LLAR WMP identified Spane Park as an ideal site for the installation of a regional BMP to support the Watershed Management Group's effort to attain its TMDL/WMP compliance targets.
- The proposed Project site has a drainage area of 1,338 acres that encompasses portions of the jurisdictions of Paramount, Downey, and South Gate.
- The proposed Project site is suitable for infiltration and a combination infiltration/filtration practices was recommended in the Preliminary Design Report.
- A large Flood Control District storm drain underlies Rosecrans Avenue, the northern border of the park.
- The project will compliment and enable the City's plans to rehabilitate park facilities to provide the community with enhanced recreational opportunities. Notably, this will include the installation of the first public-use soccer field in the City.

## Water Quality & Supply

- The Project will take the opportunity of pending rehabilitation to install an 8.6-acre-foot capacity regional stormwater capture and infiltration facility.
- Other components include a bioswale along the south end of the park, a stream, permeable pavements and bioretention areas within the parking lots and pathways, and native California landscaping in the picnic area.
- The project will address total zinc as the primary pollutant and bacteria as the secondary pollutant.
- A pump and filter system provide final pollutant removal prior to discharge back into the storm drain channel during larger events, while smaller events are anticipated to infiltrate.
- The Project is connected to a managed water supply aquifer (Central Basin of the Coastal Plain, Los Angeles aquifer) and will augment groundwater supply.



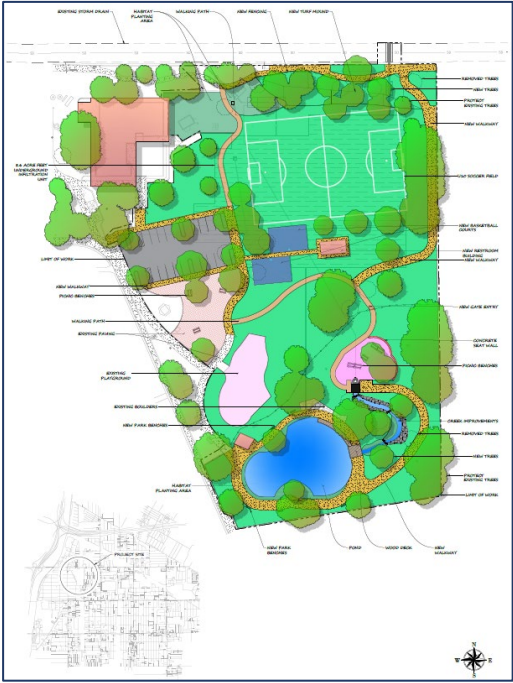
Community Benefits



- Community Benefits:
- Improved flood management (via the system’s detention and thereby flood retention capabilities)
  - Enhanced park space (via the installation of a new soccer field and an ephemeral stream supplied by the captured stormwater)
  - New recreational opportunities (via the installation of the first City-owned soccer field)
  - Enhanced green spaces for schools (Spane Park is immediately adjacent to Los Cerritos Elementary School)
  - Reduced heat island effect (via the planting of native trees, shrubs, and grasses to be installed at select spots impacted by the construction throughout the park)
  - Increased tree shade (via the planting of trees using a 2:1 ratio for each that is removed)
- DAC Considerations:
- The project is located within a disadvantaged community.
- Outreach:
- The City has engaged with the community at the City of Paramount Eco-Friendly Fair (April 22, 2022) in addition to holding two community meetings (April 26, 2022, and June 22, 2022) at the Spane Park Community Center to solicit input from the community regarding their neighborhood park.
  - Outreach and engagement efforts will continue to include community meetings, construction information via a Project website, and Project signage and announcements.
  - The target audience is local community residents and businesses.

Nature-Based Solutions

- A stream will be installed along the southern part of the park. The swale is sized to convey flow from the storage unit.
- Permeable pavements or equivalent LID elements will be installed in the parking lot.
- Landscape plans post construction include additional native, drought-tolerant trees, shrubs, and grasses to be installed at select spots impacted by the construction throughout the park.



Project Cost & Schedule

Phase	Description	Cost	Completion Date
Planning	Environmental Planning & Permitting	\$128,371	12/2022
Design	Pre-Design, Design, Construction Support, Community Outreach, Project Management	\$763,612	12/2022
Construction	Construction Costs, Contingency, Surveying, Project Management	\$17,487,971	06/2028
Construction	Construction Administration	\$1,425,157	06/2028
TOTAL		\$19,805,111	

Funding Request

Year	SCW Funding Request	Phase	Efforts during Phase and Year
1	\$9,456,564.00	Construction	Construction Costs, Surveying, Contingency, Administration, Agency Project Management
2	\$5,673,938.40	Construction	Construction Costs, Surveying, Contingency, Administration, Agency Project Management
3	\$2,836,969.20	Construction	Construction Costs, Surveying, Contingency, Administration, Agency Project Management
4	\$945,656.40	Construction	Construction Costs, Surveying, Contingency, Administration, Agency Project Management
TOTAL	\$18,913,128		

## SCW Preliminary Scoring

Benefit	Score	Description
Water Quality	50	<ul style="list-style-type: none"> <li>Wet weather project</li> <li>Capture area of 1,338 acres</li> <li>Storage volume of 8.6 acre-feet</li> <li>Primary pollutant: Zinc (90.3% reduction over 10-years)</li> <li>Secondary pollutant: Bacteria (98.1% reduction over 10-years)</li> </ul>
Water Supply	15	<ul style="list-style-type: none"> <li>Connected to the Central Basin of the Coastal Plain, Los Angeles aquifer</li> <li>The project will infiltrate and augment groundwater supply by approximately 28 ac-ft on an average annual basis</li> </ul>
Community Investment	10	<ul style="list-style-type: none"> <li>Improved flood management</li> <li>Creation/enhancement/restoration of parks</li> <li>Enhanced/new recreational opportunities</li> <li>Reducing local heat island effect</li> <li>Increasing number of trees and/or vegetation</li> </ul>
Nature Based Solutions	10	<ul style="list-style-type: none"> <li>A stream containing bioswales will be installed throughout the park and will further treat flows from the stormwater storage unit</li> <li>Removes 15,246 square feet of impervious surface</li> </ul>
Leveraged Funds	N/A	
Community Support	4	<ul style="list-style-type: none"> <li>Letters of Support received from Paramount Youth Soccer Organization (PYSO) &amp; Mujeres Unidas Sirviendo Activamente (MUSA)</li> <li>City has engaged with the community regarding the project at the Paramount Eco-Friendly Fair (April 22, 2022)</li> <li>City has held two (2) community meetings at the Spane Park Community Center (April 26, 2022, and June 22, 2022)</li> <li>Additional community meetings will be held during the construction phase</li> </ul>
TOTAL	89	