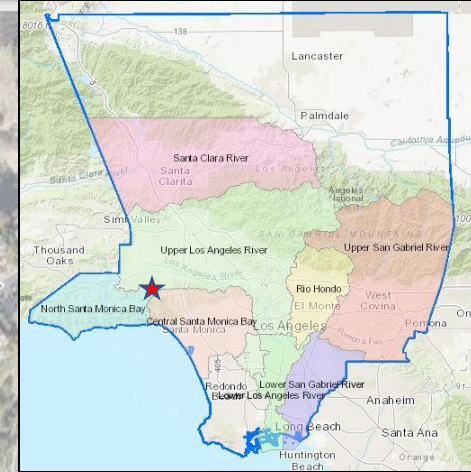
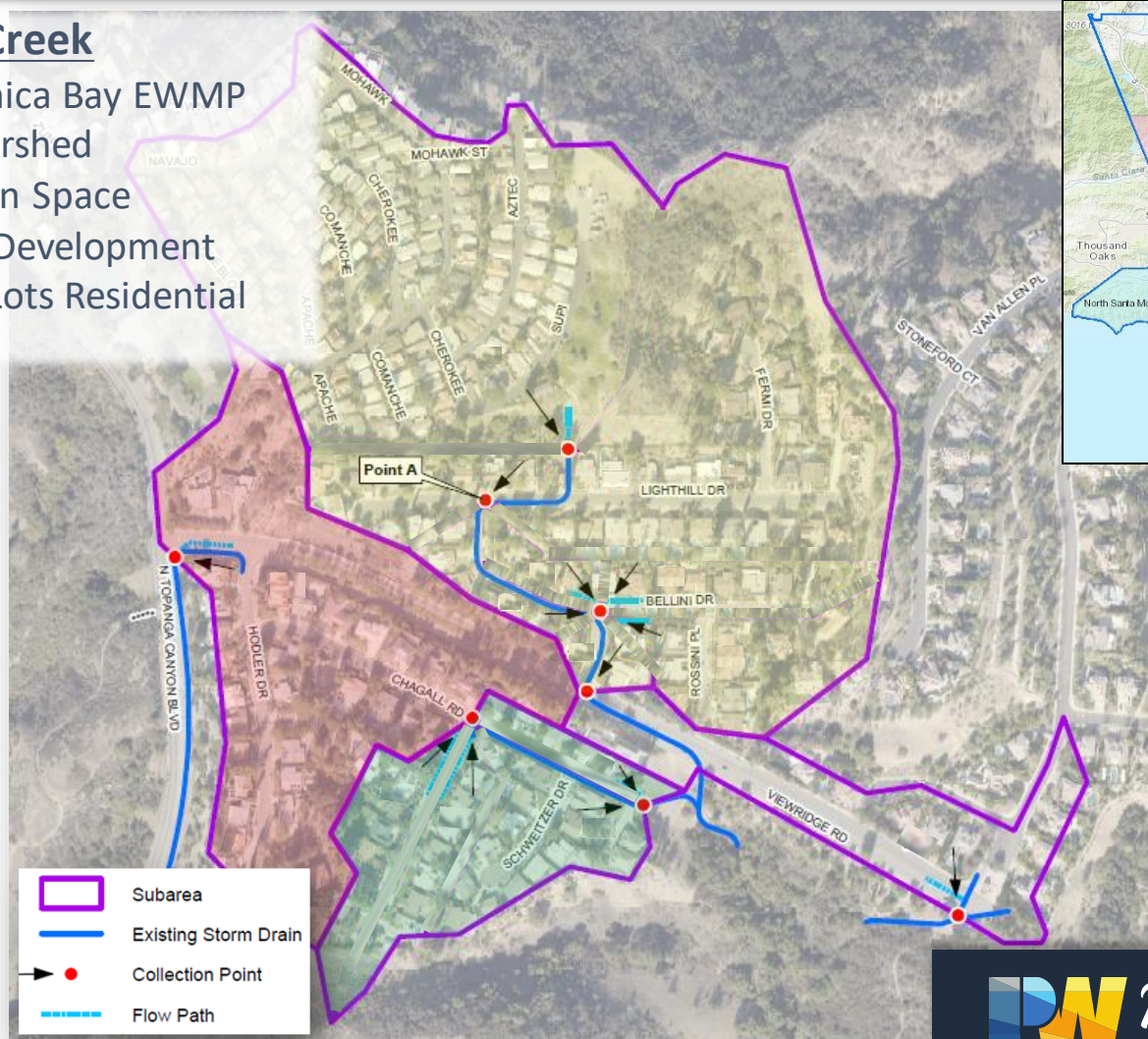


Viewridge Road Stormwater Improvements Project

Topanga Canyon Creek

- North Santa Monica Bay EWMP
- Largest Sub-watershed
- 88% Natural Open Space
- 11% Residential Development
- Rural and Small Lots Residential Subdivision



Viewridge Road Stormwater Improvements Project

Project Area

- 80 Acre Tributary
- 3.93 AF Treatment Volume
- Capacity to treat up to 33 AFY of Stormwater Runoff

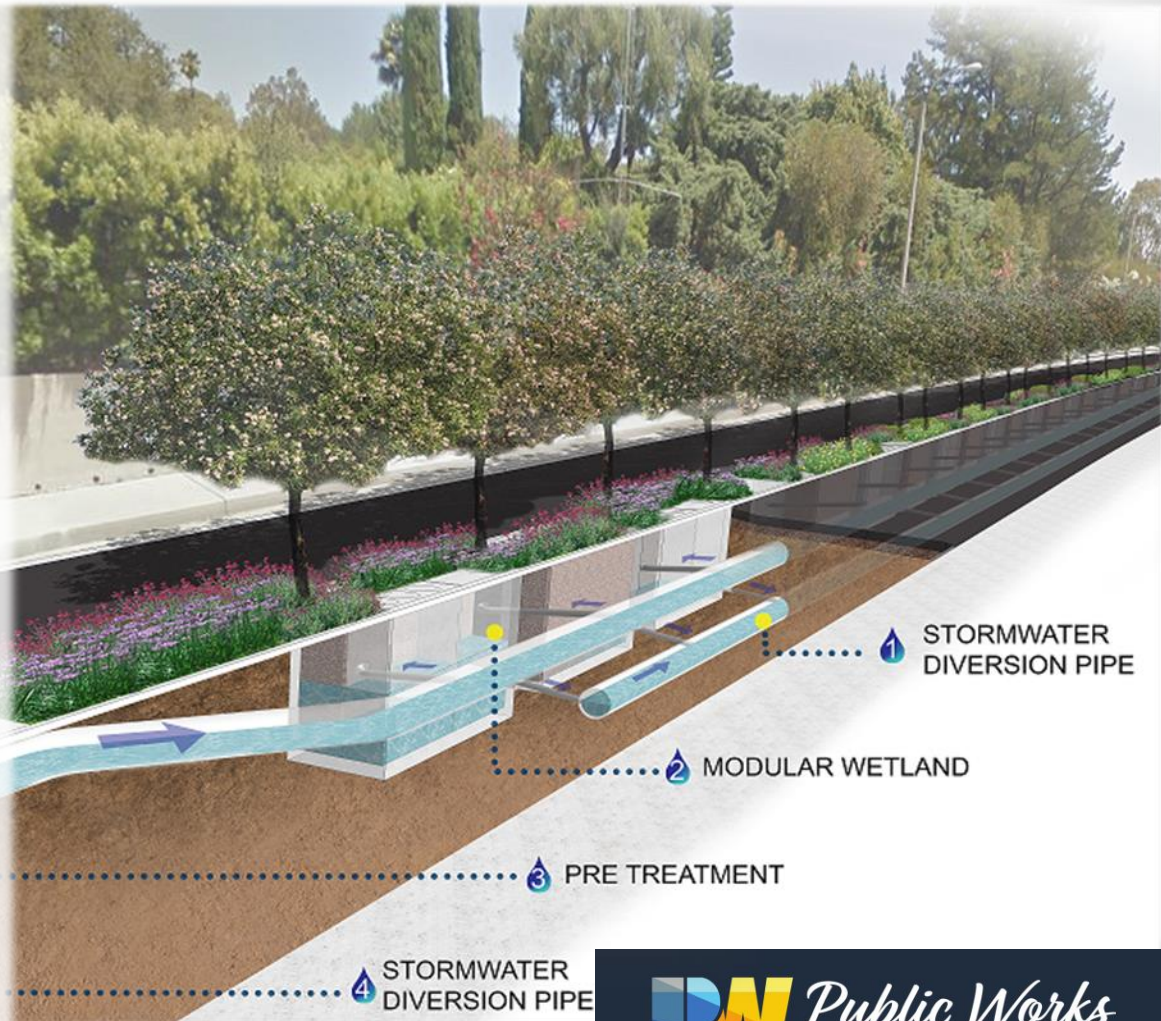
Benefits

Improved Water Quality

- Protect beneficial uses of the Topanga Canyon Creek and Santa Monica Bay habitat
- Reduction of target pollutants (Bacteria, Toxics, Sediment, Nutrients, Trash)

Improved Water Quality

- Improves flood risk mitigation
- Creates habitat
- Reduce heat island effect
- Increase number of trees/vegetation



Viewridge Road Stormwater Improvements Project

Community Outreach

- Outreach conducted to date
 - December 12, 2019
 - Topanga Canyon Library
 - February 20, 2020
 - Topanga Canyon Library
 - April 14, 2020
 - Virtual Community Meeting

Outreach Plan

- Information sessions (in-person or virtual, as needed)
- Hosted websites with information on the following
 - Documents
 - Informational graphics
 - Contact information
- Mailers and/or social media ads



Viewridge Road Stormwater Improvements Project

Estimated Project Scoring

- Water Quality – 37 points
- Community Investments – 5 points
 - Improves flood management, flood risk mitigation
 - Creates habitat
 - Reduce heat island effect
 - Increase number of trees
- Nature Based Solutions – 12 points
 - Implements natural processes
 - Utilizes natural materials
 - 42% paved area removed
- Leveraging Funds – 6 points

Total Score

- 60 points

