

# Winery Canyon Channel and Descanso Gardens Stormwater Capture and Reuse Project

## FACT SHEET

### Project Overview

The proposed project consists of a diversion from Winery Canyon Channel, pretreatment, storage in a subsurface cistern and existing lake, disinfection, and reuse of stormwater as irrigation and supply for non-interactive water features at Descanso Gardens. Two over-arching goals for this project:

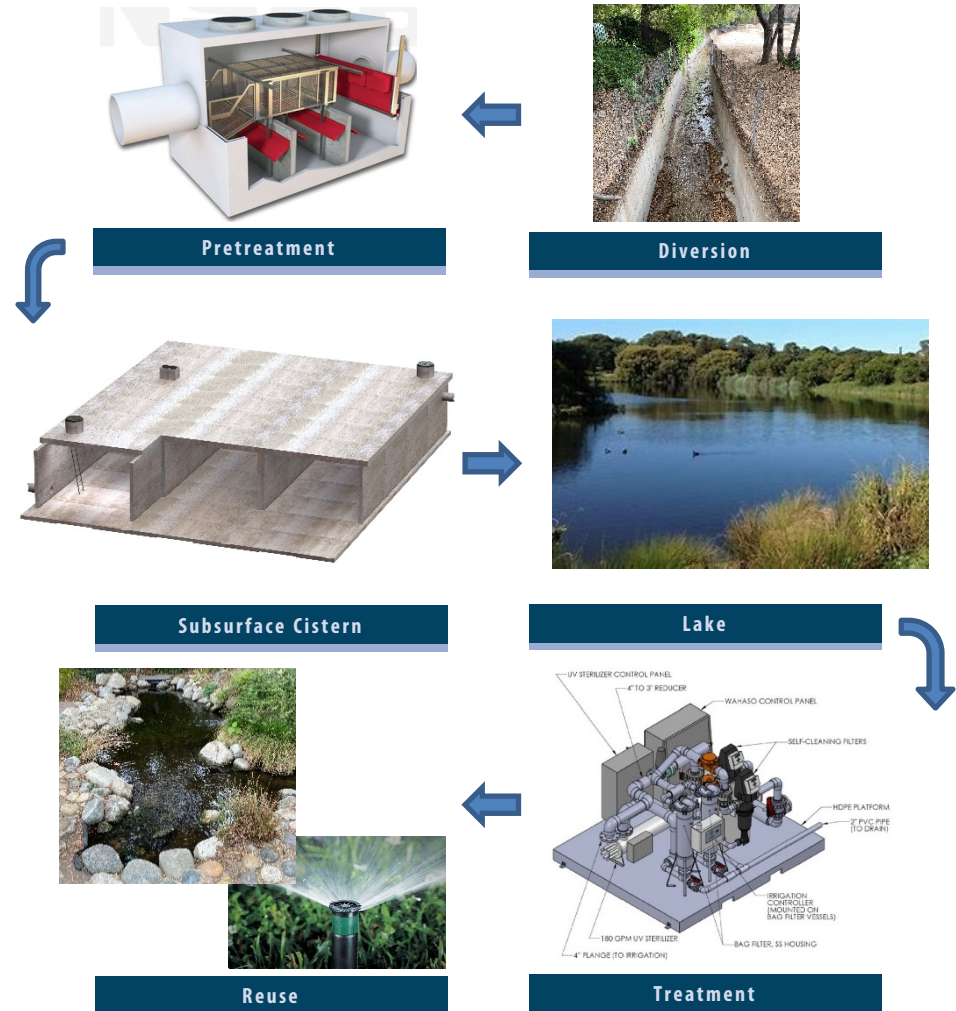
1. Offset potable water use at the Gardens which is currently their only source of water for irrigation and water features (non-interactive).
2. Help the City of La Cañada Flintridge meet their critical load reduction goals as stated in the Upper Los Angeles River Enhanced Watershed Management Program (ULAR EWMP).

To meet these project goals, water will be diverted from Winery Canyon Channel north of Descanso Gardens, pretreated to remove trash and debris, and conveyed by a gravity line under Descanso Drive to a new 4.5 ac-ft subsurface cistern at the Gardens. The cistern, which will be located under a new main parking lot extension, will also receive stormwater from a new curb inlet on Descanso Drive and trench drains located in the main parking lot. Accumulated stormwater will be transferred to the existing lake where it will then be pumped through a treatment system and ultimately used for surface irrigation and non-interactive water features. The treatment system is designed to comply with Los Angeles County Department of Public Health guidelines for stormwater reuse. The project also includes drywells to treat runoff from the auxiliary parking lot and overflow from the cistern once the system storage (cistern and lake) are at capacity.

### Project Summary

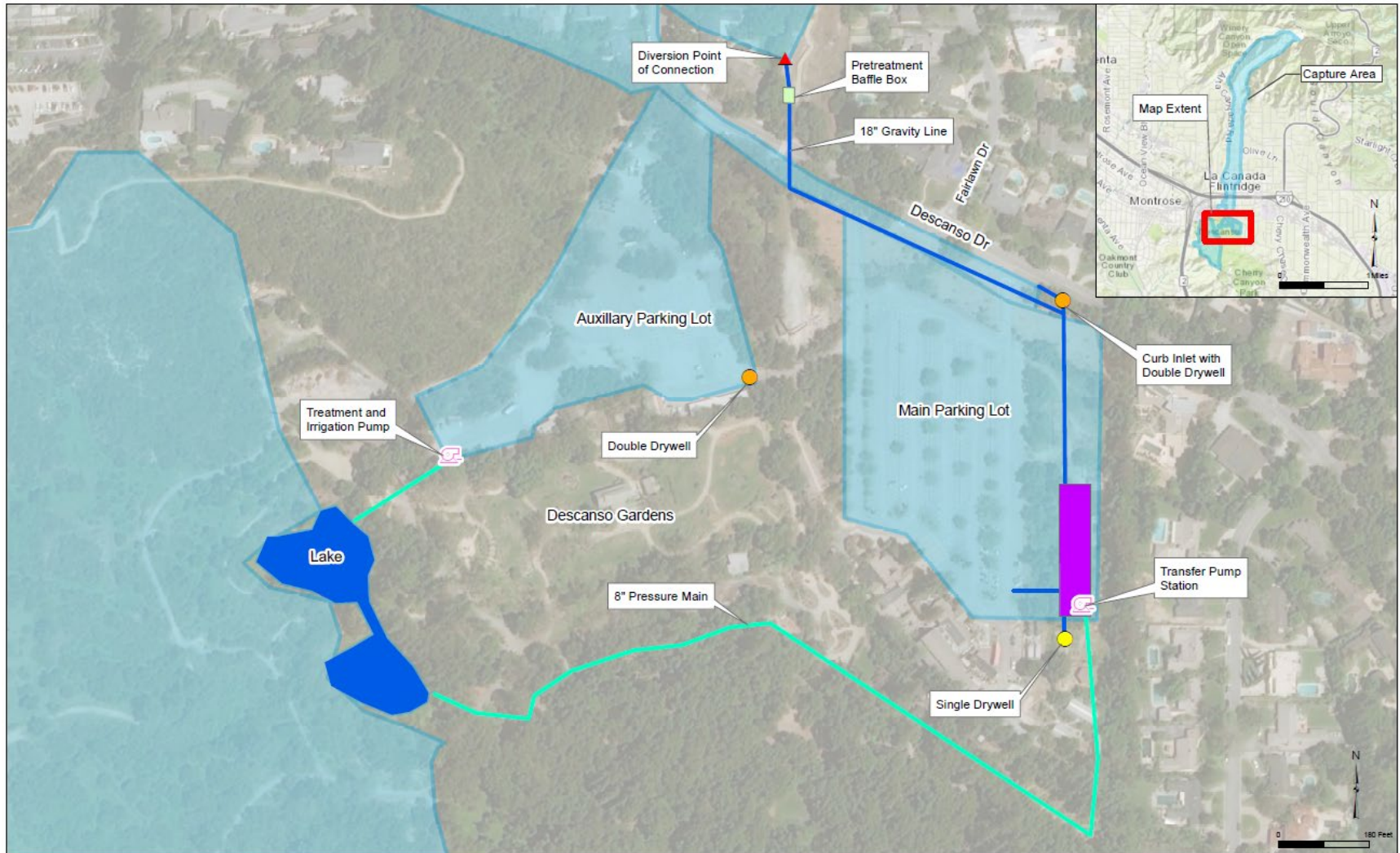
- In total, the Project proposes to capture 100% of the 85<sup>th</sup> percentile, 24-hr storm from a 311-acre capture area.
- Reuse or infiltrate over 63 acre-feet per year and provide 9 acre-feet of available storage.
- Funding request for the project is \$6.85 million.
- Project achieves 65 points in Safe, Clean Water Program scoring.

### Major Project Components



# Winery Canyon Channel and Descanso Gardens Stormwater Capture and Reuse Project

## FACT SHEET

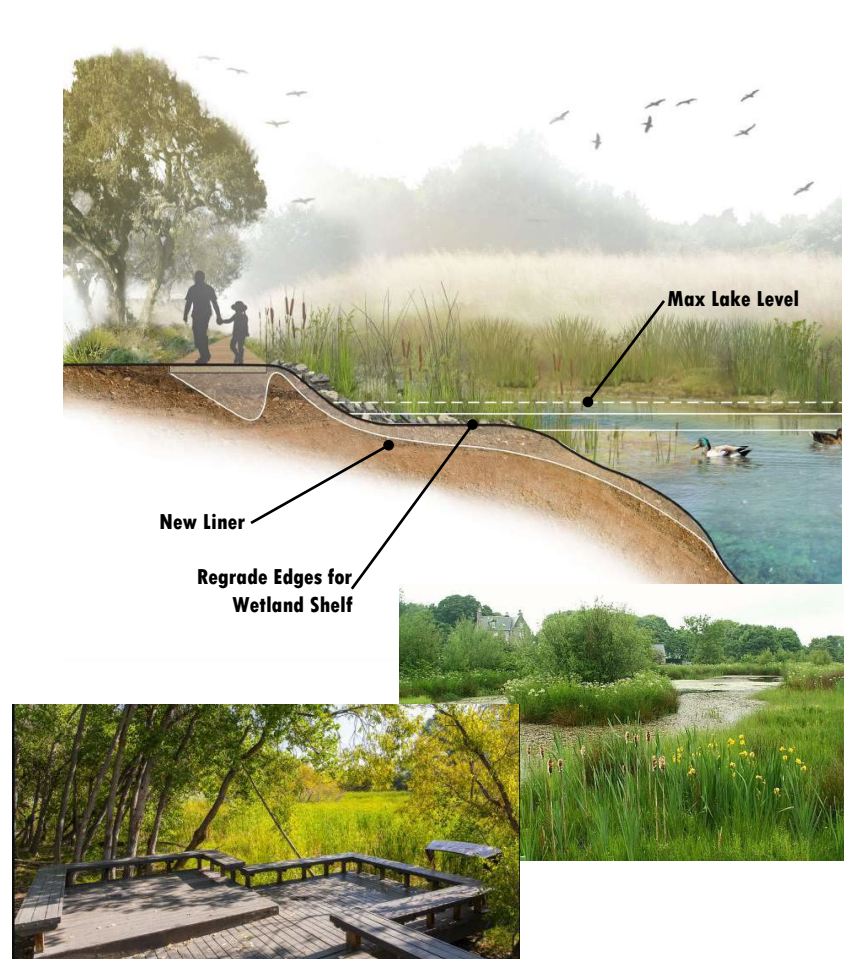


Conceptual Project Layout



# Winery Canyon Channel and Descanso Gardens Stormwater Capture and Reuse Project

## FACT SHEET



Lake Improvements (storage and recreation)



Main Parking Lot Extension (above cistern)

Above images from Descanso Gardens Master Plan